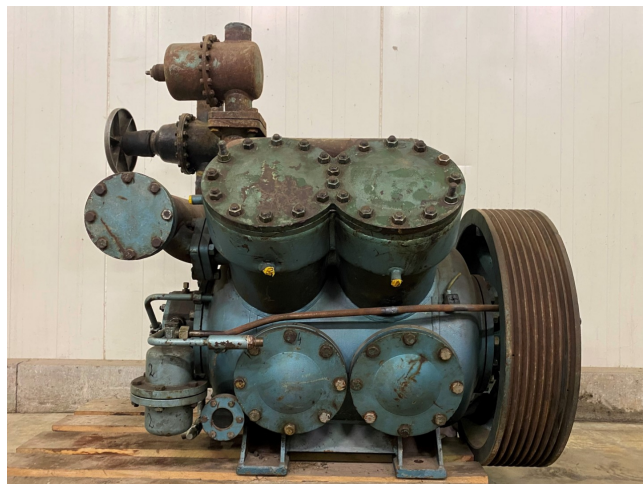


Grasso RC 411

Specifications

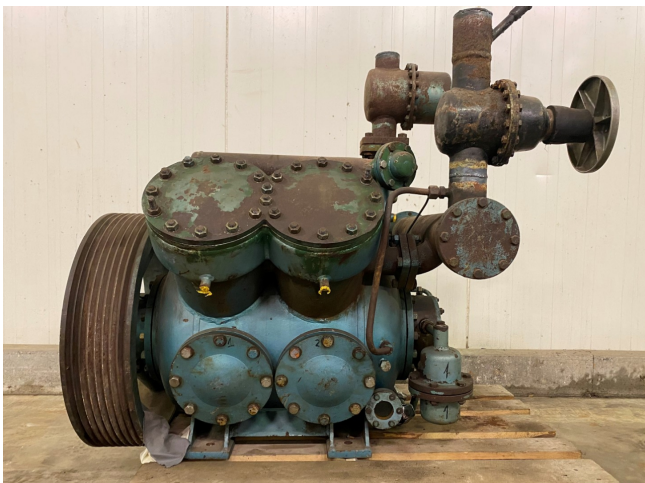
Marka	Grasso
Typ	RC 411
Czynnik chłodzący	NH 3 (ammonia)
kW at +10°C/+40°C	660
kW at 0°C/+40°C	441.82
kW at -5°C/+40°C	354.71
kW at -10°C/+40°C	278.89
Stock	1



Description

Used Grasso RC 411

Used Grasso RC 411 compressor. Our capacity table is based NH3. For all the other specs (if available), see the picture of the manufacturer model plate or the attached pdf file. *Why choose for HOSBV? Were not only the largest used refrigeration specialist in Europe, but also, we deliver all equipment including an extensive test, warranty and industrial cleaning. *Optional we can also perform a new paint job and arrange the logistics.



NH₃

GRASSO
RC 411

Single-stage

n = 1000 rpm

↓ t _c (°C)	↓ Δt _e (K)	t _e (°C)	+20	+25	+30	+35	+40	+45
+10	0	Q ₀	—	645 500	604 900	603 700	581 900	559 400
	5	(kcal/h)	—	629 600	609 500	589 900	567 500	545 600
	10		—	614 800	595 300	575 100	554 200	532 800
	—	P _e (kW)	—	68.8	80.0	91.8	104.1	116.6
+5	0	Q ₀	553 900	536 200	517 800	498 000	479 200	459 000
	5	(kcal/h)	540 900	523 200	505 300	486 800	467 600	447 900
	10		528 000	511 100	493 600	475 500	456 800	437 600
	—	P _e (kW)	59.6	69.4	79.8	90.6	101.6	112.6
0	0	Q ₀	456 800	441 000	424 500	407 500	389 900	371 600
	5	(kcal/h)	445 100	429 700	413 700	397 100	379 900	362 100
	10		435 000	419 900	404 300	388 000	371 200	353 900
	—	P _e (kW)	60.0	69.1	78.6	88.2	97.7	106.9
-5	0	Q ₀	372 600	358 400	343 600	328 300	312 300	295 800
	5	(kcal/h)	363 800	350 000	335 600	320 600	305 000	288 800
	10		355 600	342 100	328 000	313 300	298 100	—
	—	P _e (kW)	59.6	67.8	76.1	84.3	92.1	99.2
-10	0	Q ₀	300 100	287 300	274 000	260 100	245 600	—
	5	(kcal/h)	293 000	280 600	267 600	254 000	239 800	—
	10		286 500	274 500	261 600	248 300	—	—
	—	P _e (kW)	58.2	65.3	72.3	78.8	84.6	—
-15	0	Q ₀	238 000	226 400	214 500	201 700	—	—
	5	(kcal/h)	232 400	221 500	209 300	197 000	—	—
	10		227 200	216 200	204 700	—	—	—
	—	P _e (kW)	55.8	61.6	67.0	71.5	—	—